

# ProRAE Remote

Wireless, Multi-channel, Integrated AreaRAE Host Controller System

## ProRAE Remote

**ProRAE Remote** is the PC based software that provides a simple Windows® user interface that integrates the outputs of remote sensors into user-friendly displays. It also facilitates real-time, two-way wireless communication between AreaRAE and base controller:

- Continuously displays sensor data
- Shows alarm status when necessary
- Can send alarm to cell phones and pagers
- Can communicate back to the remote sensor with text messages
- With GPS option, displays location of individual remote monitors on a geographic map

The RF modem allows real-time data transmissions with a base controller located up to two-miles away from the AreaRAE detector. A personal computer can be used as the base station for an AreaRAE system. The standard **ProRAE Remote** software used to control AreaRAE systems is capable of monitoring the input of up to 32 remotely located monitors.

## ProRAE Remote: Panel View

### Panel View-Normal



Panel View is the main window that emulates a traditional hardwired panel display providing display ID and normal (green) or alarm status (flashing red) of each monitor in the system in real time.

**Alarms:** panel view will provide audible alarms using a simulated voice along with visual alarms.

### Panel View-Alarm



### Red "Stop Sign" Alarm Indicator

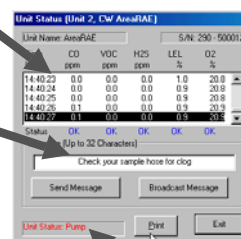
### Panel View-Status Window



### Status Window-Detail

Displays data from remote sensors: every sensor reading is updated at the master polling interval

**Text Message:** Can send command to remote monitor to activate audible and visual alarm along with text messages to the display on the remote sensor(s)

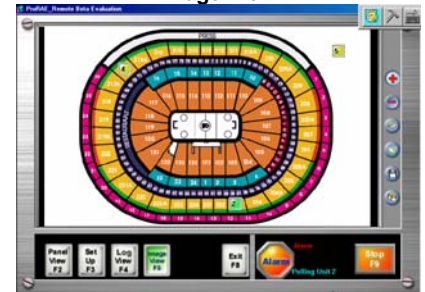


**Alarm Box:** red text display shows pump is clogged

## ProRAE Remote: Image View

Image view allows users to place the remote unit on an imported map (bmp, jpg, gif). This is perfect for indoor applications when GPS will not work. Status windows can be shown on this view just like panel view.

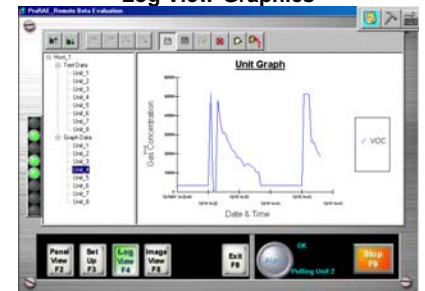
### Image View



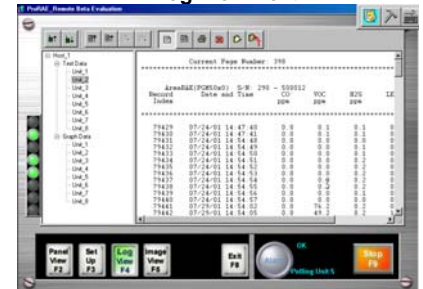
## ProRAE Remote: Log View

Log view can show the history of each remote unit on the AreaRAE system as either text or graphic data.

### Log View-Graphics



### Log View-Text



## Specifications

### Minimum Hardware Requirements

|               |   |
|---------------|---|
| CPU           | Pentium class 330 MHz                                       |
| Display       | SVGA (800 X 600 resolution), 16 bit color                   |
| Hard Drive    | 30-MB available hard disk space.                            |
| Optical Drive | CD-ROM drive  |
| Serial Port   | RS-232 COM port for communication to RAELink modem          |
| LAN           | LAN with internet access to enable email alarm notification |
| Sound card    | Required for voice alarm notification                       |

### Minimum Software Requirements

|                  |  |
|------------------|--|
| Operating System | Windows® 98 2 <sup>nd</sup> edition, Windows® NT SP4 or higher, Windows® 2000 or Windows® XP |
| Browser          | Microsoft® Internet Explorer 4.01 or higher to view the ProRAE Remote online help            |

### RAELink Specifications

|                           |  |
|---------------------------|--|
| <b>Frequency:</b>         | 902 - 928 MHz (License free ISM band)      |
| Spreading Method:         | Frequency Hopping                          |
| Hopping Pattern:          | 15   |
| Hopping Channel:          | 50-112                                     |
| <b>Range</b>              | 2 Miles                                    |
| Output Power              | 400 mW (+25 dBm) at 7.5V to 9.5 V          |
| Modulation                | GFSK, 120 kBs-170 kBs                      |
| Occupied Bandwidth        | 230 kHz                                    |
| <b>Receiver:</b>          |  |
| Sensitivity               | -108 dBm at 10-6 raw BER                   |
| Selectivity               | 40 dB at fc 230 kHz<br>60 dB at fc 460 kHz |
| <b>Data Transmission:</b> |  |
| Error Detection           | 32 bit CRC, resend on error                |
| Data encryption           | Substitution, dynamic key                  |
| Link throughput           | 115 Kbaud                                  |
| Interface                 | RS-232, 19.2 Kbaud                         |
| <b>Operating Mode:</b>    | Point to multipoint                        |

## ProRAE Remote Accessories

### ProRAE Remote Turn-key System Package includes:

- Notebook PC
  - Pre-loaded with ProRAE Remote software
  - Fully configured, tested and ready to go
- ProRAE Remote software CD
- Quick reference guide
- Operation and Maintenance Manual
- RS-232 cable
- RAELink Master modem
  - Built-in rechargeable Lithium-ion battery
  - 120/240 VAC AC/DC Adapter
  - IEC - USG AC line cord
- 5db antenna with magnetic mount and 12 feet of cable
- Hard transport case with pre-cut foam

### ProRAE Remote Basic Host Package Includes:

- ProRAE Remote software CD
- Quick reference guide
- Operation and Maintenance Manual
- RS-232 cable
- RAELink Master modem
  - Built-in rechargeable Lithium-ion battery
  - 120/240 VAC AC/DC Adapter
  - IEC - USG AC line cord
- 5db antenna with magnetic mount and 12 feet of cable
- Hard transport case with pre-cut foam

### ProRAE Remote Part Numbers:

- ProRAE Turn-key System Package: 029-5110-000
- ProRAE Remote Basic Host Package: 029-5001-000



DISTRIBUTED BY:



ProRAE Remote